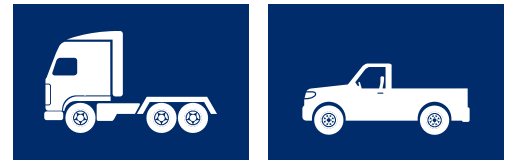




# LADDER STYLE TIRE CHAINS INSTALLATION INSTRUCTIONS



## 1. LAY CHAINS OUT FLAT



**1A** Cross Chain Hook   **1B** Quick Hook   **1C** Fastener

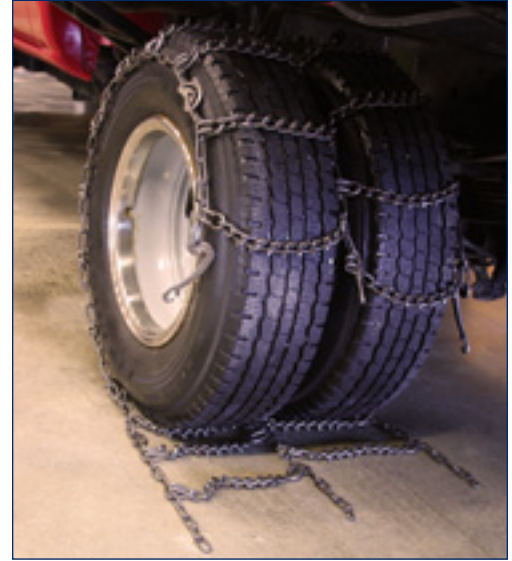
Lay chains out flat behind Vehicle tire with aggressive side of chains facing upward. Make sure ends of cross chain hooks are facing up (1A). Position quick hook (1B) on the inside of tire, and the side chain fastener (1C) on the outside of tire. Remove all twist and tangles.\*

## 2. DRAPE CHAINS OVER TIRE



Drape chains over tire in the same position. Make sure aggressive side of chains, and ends of cross chain hooks face up and away from tire. Position chains to touch the ground in front of the tire and tuck first cross chain under tire a bit in preparation to roll over them.

## 3. ROLL VEHICLE FORWARD



Roll Vehicle forward over chains until the quick hook and fastener are positioned midway on the tire and both side chain ends are easily accessible. Adjust chains to be centered on tire treads.

## 4. ATTACH QUICK HOOK AND FASTENER



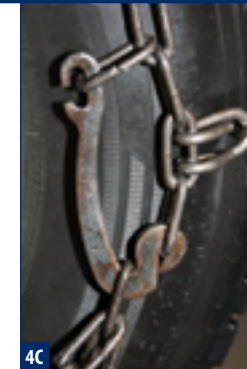
**4A**  
Center of tires



**4B**  
Center of tires



**4B**  
Inside & Outside of tires



**4C**  
Inside & Outside of tires

**4A.** Pull center side chain tight and attach link to quick hook. Note the number of links remaining.

**4B.** Place end of fastener through link. Fold fastener back toward side chain to tighten. To increase tension, place fastener one link lower and fold back. Re-tighten inner quick hook.

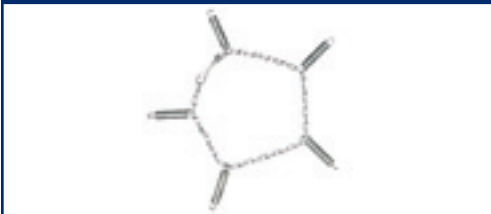
**4C.** Attach fastener under link on side chain. Tire chains should fit snug. To tighten more, **REPEAT STEPS 4A-4C.**

## 5. TEST DRIVE. INSPECT. RE-TIGHTEN.



Test drive, inspect, re-tighten tire chains by **REPEATING STEPS 4A- 4C** so chains fit snug around the tire. Make sure the quick hook and fastener are secure. Attach extra links back to the side chain with heavy duty cable ties (5A).

## 6. ADD CHAIN ADJUSTER



Add chain adjuster for a more secure fit and to extend the life of your chains.

### DRIVE SAFE—DO NOT

- Deflate tires to install tire chains.
- Drive over fasteners and hooks while installing chains.
- Install tire chains the wrong way.
- Install broken tire chains.
- Drive with broken tire chains.
- Use tire chains when towing other vehicles.
- Hit curbing with tire chains on.
- Accelerate rapidly.
- Spin tires.