

1. LAY CHAINS OUT FLAT



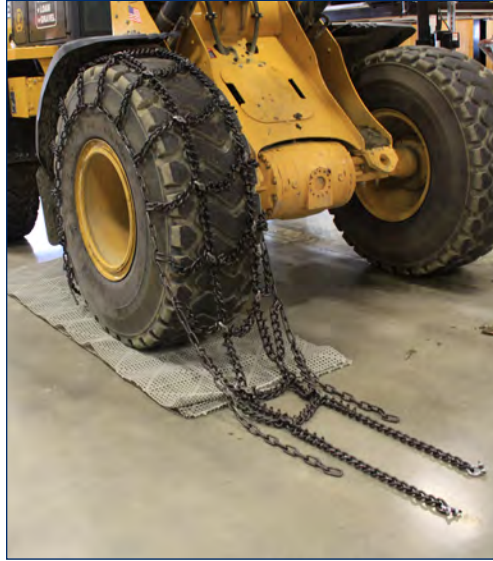
1A Fastener and Fastener Link

1B Plug Coupling

1C Shackles

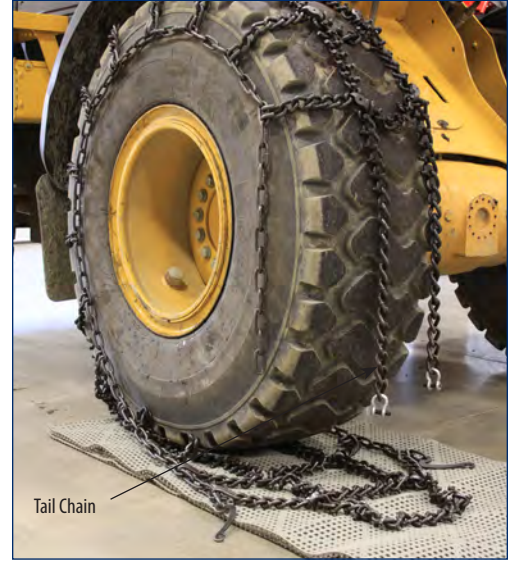
Lay chains out flat behind equipment making sure ends of cross chain hooks are facing up. Remove all twist and tangles.

2. DRAPE CHAINS OVER TIRE



Drape chains over tire in the same position making sure ends of cross chain hooks face up and away from tire. Center chains on tire and position them to touch the ground in front of the tire. Tuck first cross chain under tire a bit in preparation to roll over them.

3. ROLL EQUIPMENT FORWARD



Tail Chain

Roll equipment until the end of the chains are at a good working height—approximately axle height.

4. FASTEN CHAINS



Center of tire

Inside and Outside of tire

Center of tire

Inside and Outside of tire

4A. Pull tail chains tight. Using the plug couplings, connect the center sections of chain.

4B. Connect fastener on inside the tire. Count the same number of links on the outer side chain and place end of fastener through that link.

4C. Pull tail chain to tighten. Connect shackle on tail chain to side chain.

4D. Attach fastener under link on side chain. Tire chains should fit snug. To tighten more, **REPEAT STEPS 4A-4D.**

6. ADD CHAIN ADJUSTERS



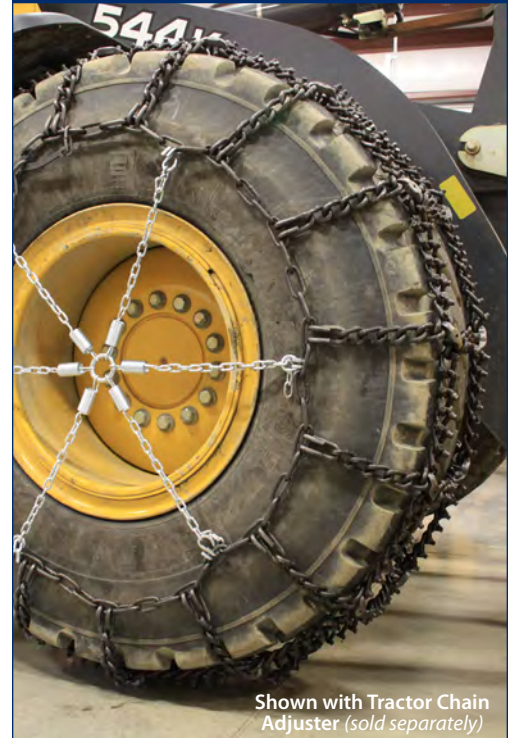
Tractor Chain Adjuster
(Binder Included)

Add chain adjusters for a more secure fit and to extend the life of your chains.

DRIVE SAFE—DO NOT

- Deflate tires to install tire chains.
- Drive over fasteners and hooks while installing chains.
- Install tire chains the wrong way.
- Install broken tire chains.
- Drive with broken tire chains.
- Use tire chains when towing other vehicles.
- Hit curbing with tire chains on.
- Accelerate rapidly.
- Spin tires.

5. TEST DRIVE. INSPECT. RE-TIGHTEN.



Shown with Tractor Chain Adjuster (sold separately)

Test Drive, Inspect, Re-Tighten tire chains by **REPEATING STEPS 4A- 4D** so chains fit snug around the tire. Make sure the quick hook and fastener are secure.