

w w w . c h a i n a n d c a b l e . c o m



HEAVY EQUIPMENT
DURABILITY. PERFORMANCE.



Predator™ Skid Steer **4 Link** **2 Link***



It all begins with steel! Go for the Gold! Go Predator™. Nickel, chrome, and manganese are all essential elements for maximum strength and durability. Predator has that and more!

Featuring HRC hardness nearly 61 surface, 41 core, with an estimated 10% case hardening depth, this chain was specifically designed for the most demanding applications.

Then there's performance! Our unique square link design not only delivers 35% more traction than conventional twist link chain, it normally lasts four times longer.

All Predator™ Square Link tire chains are easily recognized with their distinct gold chromate colored cross chains.

All Predator™ Skid Steer chains come standard with boomer end fasteners.

** If you are interested in the Predator™ Skid Steer in a 2-Link version, please contact us for details.*

PREDATOR™ SKID STEER—4 LINK

Part #	Tire Size	Cross Chain Part #	Cross Chains per Half Pair	Wt (lbs) per Pair
3410i	10-16.5LT	1009Si	9	60
3429i	12-16.5	1011Si	9	67
3435i	14-17.5	1011Si	11	81

PREDATOR™ CONTINUOUS CROSS CHAIN

Part #	Diameter	Packaged Length	Weight (lbs)
31375a	10mm	50'	70

STRETCH TIRE CHAIN ADJUSTER (SHOWN ABOVE)

Part #	Description	Pairs per Package	Weight (lbs)
0251i	Stretch Tire Chain Adjuster, Light Truck, Rim Sizes Under 17"	1	.8
0252i	Stretch Tire Chain Adjuster, Heavy Truck, Rim Sizes of 17" and Larger	1	1.6



Predator™ Swivel Grip

Predator Swivel Grip ladder style chains have the same great features and construction as the Predator Skid Steer, plus a Swivel hook (*below*) to allow for easy installation of cross chains while the chain is still on the tire.

PREDATOR™ SWIVEL GRIP

Part #	Tire Size	Cross Chain Part #	Cross Chains per Half Pair	Wt (lbs) per Pair
2612Si	14.00-20	420/70-24	6630Si	13
	395/85-20	13.00-25		
	14.00-21	15.5-25		
	13.00-24			
2615Si	14.00-24	14.00-25	6630Si	14
	385/95R24			
2624Si	16.00-20	17.5L-24	6640Si	13
	16.00-21	17.5-25		
2627Si	16.00-24		6640Si	15
	16.00-25			
2633Si	21L-24	550/65-25	6650Si	14
	20.5-25	555/70-25		
2645Si	23.5-25	750/65-25	6660Si	16
	705/70-25	705/70-25		

PREDATOR™ CONTINUOUS CROSS CHAIN

Part #	Diameter	Packaged Length	Weight (lbs)
31375a	10mm	50'	70



Swivel hooks on the end of the cross chains allow for easy installation of replacement cross chains.



Twist Link Equipment

Twist Link ladder style chains are built exclusively for heavy duty commercial equipment such as graders, scrapers, and loaders. Packed in cotton bags.

EQUIPMENT

Part #	Tire Size	Cross Chain Part #	Cross Chains per Half Pair	Wt (lbs) per Pair
2612i	14.00-20	6630i	14	109
	395/85-20			
	14.00-21			
	13.00-24			
	420/70-24			
	13.00-25			
2615i	14.00-24	6630i	16	124
	385/95R24			
	14.00-25			
2624i	16.00-20	6640i	13	149
	16.00-21			
	17.5L-24			
2627i	16.00-24	6640i	15	163
	16.00-25			
2633i	21L-24	6650i	14	185
	20.5-25			
	550/65-25			
	555/70-25			
2645i	23.5-25	6660i	15	354
	705/70-25			
	750/65-25			
2657i	26.5-25	6670i	17	438
	29.5-25			
	755/70-25			
	26.5-29			

CONTINUOUS TWIST LINK CROSS CHAIN

Part #	Dia.	Packaged Length	Weight (lbs)
30375i	3/8"	50'	65
30437i	7/16"	50'	85
30531i	17/32"	25'	70

TWIST LINK REPLACEMENT CROSS CHAIN WITH HOOKS

Part #	Number of Links	Dia.	Hook Dia.	Length w/Hook	Pieces /pkg.	Weight (lbs) per package
6630i	17	3/8"	13/32"	25.01"	5	14
6640i	15	7/16"	7/16"	28.19"	5	20
6650i	19	7/16"	7/16"	34.44"	5	25
6660i	20	17/32"	17/32"	39.29"	5	47

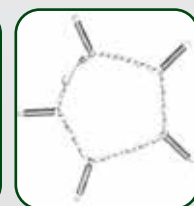


Twist Link Forklift

Twist Link forklift tire chains provide increased traction and fit most industrial and commercial fork trucks. Packed in cotton bags.

FORKLIFT

Part #	Tire Size	Cross Chain Part #	Cross Chains per Half Pair	Wt (lbs) per Pair
FL10i	6.50-10	FL80i	10	12
FL15i	25x8.50-14	FL81i	11	22
	25x7.50-15			
	27x8.50-15			
FL20i	7.00-15	FL81i	12	24
FL25i	7.50-10	FL82i	11	23
	7.00-12			
FL30i	29x8-15	FL83i	9	41
	8.15-15			
FL35i	235/70-15	FL84i	9	43
	28x9-15			
	7.50-15			
FL40i	8.25-15	FL84i	10	47
FL45i	250-15	FL85i	9	44
FL50i	28x12-15	FL86i	10	54
FL60i	15-19.5	FL88i	14	80



Spring Tire Chain Adjuster Tractor/Grader/Loader with Binder

Part # 0275i

Spring Tire Chain Adjuster, Light Truck

Part # 0272i, Rim Sizes Under 17"

Spring Tire Chain Adjuster, Heavy Truck

Part # 0273i, Rim Sizes of 17" and Larger

TALON GRADER/LOADER



Aquiline® Talon Chains are built with studded cross chains, manufactured from specially designed alloy steel, which is case hardened for added durability. Talon tire chains feature robotically fused studs to provide the ultimate in off-road traction. Talon tire chains have easy to use boomer style side chain fasteners and heavy-duty cross chain hooks. The box pattern of the chains ensures that these chains will not fall between the lugs of the tire. Aquiline® Talon tire chains are built to give you the best traction available.



AQUILINE® TALON GRADER/LOADER

Part #	Tire Size	Weight per Pair (lbs/kg)
13024ASH	13.00-24	302 / 136.9
14020ASH	14.00-20	302 / 136.9
14024ASH	14.00-24, 14.00-25	335 / 151.9
15525ASH	15.5-25	305 / 138.3

AQUILINE® TALON GRADER/LOADER

Part #	Tire Size	Weight per Pair (lbs/kg)
17524ASH	17.5-24	317 / 143.7
17525ASH	17.5-25	334 / 151.5
19524ASH	19.5L-24	349 / 158.3
20525ASH	20.5-25	413 / 187.3

CMVT Chain Tightening Tool

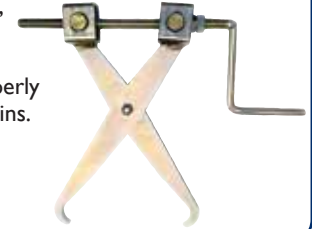
For easy installation and maintenance requirements.



Removable handle doubles as a shackle tightener.

OL67798222 - Mounting Tool #3

Scissor type chain tightener facilitates installation and maintenance requirements, resulting in longer chain life from properly tightened chains.



ICC® HEAVY EQUIPMENT TIRE CHAIN ACCESSORIES

CONTINUOUS SIDE CHAIN

Part #	Description	Dia.	Packaged Length	Weight (lbs)
40192i	Light Forklift	3/16"	100'	30
40218i	Med. Forklift	7/32"	100'	30
40312i	Skidsteer, Hvy. Forklift, Heavy Equip.	5/16"	100'	70
40437i	Heavy Equip.	7/16"	50'	70

CROSS CHAIN REPAIR LINKS



Part #	Description	Dia.	Pieces per pkg.	Weight (lbs)
9233i	Light Forklift	13/64"	25	1
9253i	Med. Forklift	1/4"	25	2

SIDE CHAIN FASTENERS

Part #	Description	Pieces per pkg.	Weight (lbs)
15003i	Med. Forklift	25	8
15004i	Heavy Forklift, Heavy Equip.	25	15
15007i	Heavy Equip.	25	28

SIDE CHAIN REPAIR LINKS



Part #	Description	Dia.	Pieces per pkg.	Weight (lbs)
9116Bi	Light Forklift	1/4"	50	4
9116Ci	Skidsteer, Heavy Forklift, Heavy Equip.	5/16"	50	5
9116Di	Heavy Equip.	3/8"	50	10
9116Fi	Heavy Equip.	1/2"	10	4

CROSS CHAIN HOOKS

Part #	Description	Dia.	Pieces per pkg.	Weight (lbs)
20250i	Standard	1/4"	50	5
20375i	Standard	3/8"	50	10
20406i	Standard	13/32"	50	15
20437i	Standard	7/16"	50	20
20531i	Standard	17/32"	50	35
4525i	Swivel	11mm	50	13
5115i	Swivel	13mm	50	15
5905i	Swivel	14.5mm	50	20

BOOMER FASTENERS



Part #	Description	Pieces per pkg.	Weight (lbs)
10246320	Boomer 6-7mm with Link	1	.25
89S	Boomer 8-9mm With Link	1	.50
89GL	Boomer 10-11mm With Link	1	.75

CHAIN REPAIR PLIERS

Part #	Description	Handle Length	Weight (lbs)
7302i	X-Large	30"	9



QUICK HOOKS



Part #	Description	Dia.	Pieces per pkg.	Weight (lbs)
10312i	Med. Truck	5/16"	25	3
10375i	Heavy Equip.	3/8"	25	3
10406i	Heavy Equip.	13/32"	25	5



YOUR LOCAL DEALER

www.chainandcable.com
International Chain and Cable is a division of Wallingford's Inc.



MARKETED WORLDWIDE by

Wallingford's Inc.
1010 Kennedy Memorial Drive
Oakland, ME USA 04963
207 465 9575 | 800 323 3708
Fax: 207 465 9601
www.wallingfords.com
info@wallingfords.com



WALLINGFORD'S INC.